



UNIVERSITY OF LEEDS

## CANDIDATE BRIEF

Research Fellow in Computational Social Science,  
Faculty of Engineering and Physical Sciences



**Salary: Grade 7 (£34,304 – £40,927 p.a.)** Due to funding restrictions, an appointment will not be made higher than £36,382 p.a.

**Reference: EPSCP1098**

**Closing date: Thursday 23 June 2022**

**Fixed-term for 2.5 years**

**We will consider flexible working arrangements**

## Research Fellow in Computational Social Science, School of Computing.

**Are you eager to improve collective decision-making to make cities more sustainable and democratic? Are you fascinated to work with data science, machine learning and computational methods applied on collective decision-making, social choice theory and voting systems?**

This is an opportunity to be part of a creative research team working on a new ambitious research programme with several collaboration, training and career development opportunities in industry, cities, and world-leading academic institutes in the UK and Europe. The Distributed and Intelligent Social Computing lab at the University of Leeds will run this unique programme with the aim to empower citizens' participation in governing common pool resources in Smart Cities such as smart transport, parking and energy systems.

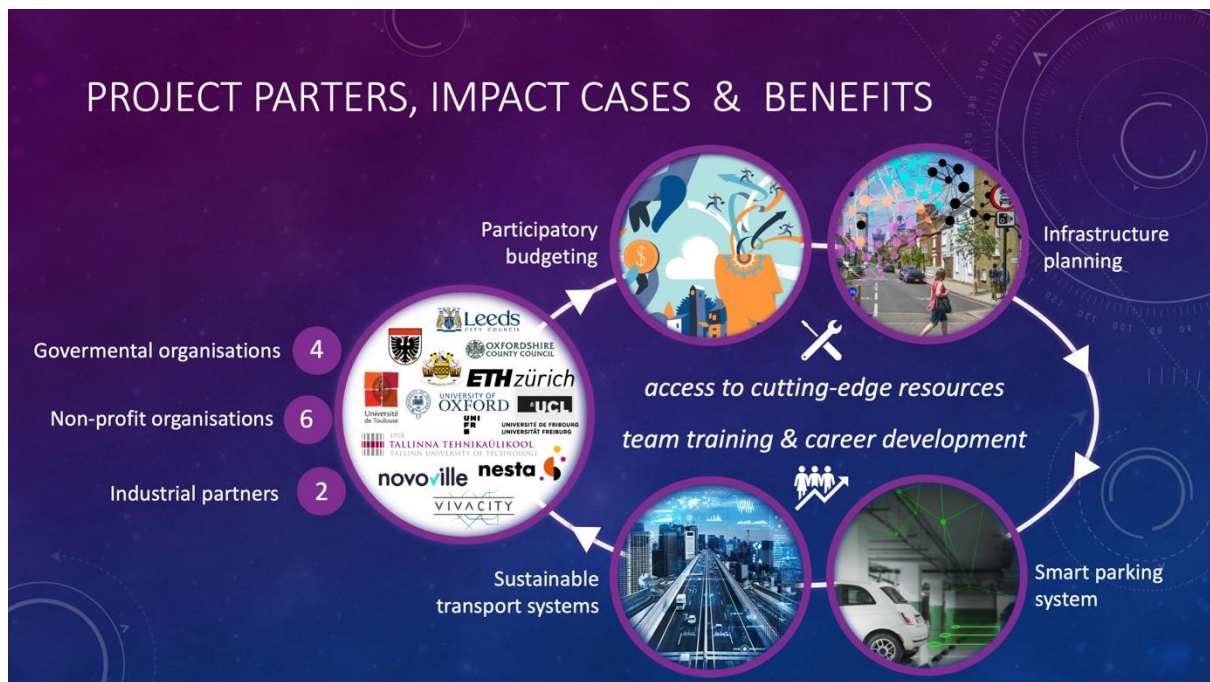
The successful candidate will publish high-quality research on the broader area of computational social science, design and perform experiments in collaboration with partners and collaborate with other researchers in an inter-disciplinary team.

The research programme is designed to offer exceptional access to resources, training and career development opportunities including:

- Access to a new laboratory space in the new [Sir William Henry Bragg Building](#) of School of Computing and access to [Virtuocity](#), an immersive, “human in the loop”, simulation and visualisation facility.
- A national and an international network of partners that will support the research programme with access to novel real-world data, training and career development opportunities via funded visits and secondments as well as support for field test studies. Partners include among others: the Innovation Hub of Oxfordshire County Council, Novoville, Vivacity, the Urban Traffic Control system of Leeds city, Nesta as well as partners in Switzerland, France and Estonia.
- Novel training programmes at the University of Leeds including opportunities for enhancing interdisciplinary research via the [Crucible programme](#) or pathways to commercialization and business engagement via the [Michael Beverley Innovation Fellowship](#).







## What does the role entail?

As a Research Fellow, your main duties will include:

- Generating and pursuing independent and original research ideas within the project scope and beyond;
- Developing new research objectives and shaping the research programme both in short and long term, including preparing proposals for funding in collaboration with colleagues;
- Designing data collection and experimental processes including the preparation of ethical approval applications;
- Writing software code, documentation, performing experiments, collecting data for analysis;
- Preparing papers for publication in leading international journals and conferences;
- Dissemination and exploitation of research results within and beyond the network of partners;
- Working both independently and also as part of a larger interdisciplinary team of researchers, engaging in training and knowledge-transfer activities where appropriate and feasible;



- Participating and contributing to local, online and remote project meetings, including the organisation and preparation of workshops and hackathons;
- Assisting in the supervision of MSc and PhD students in areas relevant to the project;
- Maintaining your own continuing professional development and acting as a mentor to less experienced colleagues as appropriate.

These duties provide a framework for the role and should not be regarded as a definitive list. Other reasonable duties may be required consistent with the grade of the post.

## What will you bring to the role?

As a Research Fellow, you will have:

- A PhD (or have submitted your thesis before taking up the role) in the broader area of Computational Social Science or a closely allied discipline (e.g. data science, collective intelligence, computational social choice, mechanism design, social simulation, agent-based modelling etc.);
- Programming skills and practical experience in data science, machine learning and/or agent-based simulation, e.g. Python, R, or Java, database systems, collecting, cleaning, processing, retrieving and visualizing data, etc;
- A proven track record of peer-reviewed publications in high-quality journals and conferences;
- Good time management and planning skills with the ability to prioritise and meet deadlines;
- Excellent written and verbal communication skills including presentation skills;
- A proven ability to work well both individually and in a team with the ability to run effective collaborations, e.g. projects, and/or partners from academia, industry or policy;
- Demonstratable research ambition, drive for research impact, commitment to research quality, independence and resilience to tackle research challenges.

You may also have:

- Experience with lab/online human experimentation, including recruitment, experimental design, ethical approval applications as well as interest on equality, diversity and inclusion aspects in digital society, e.g. AI ethics and trust, autonomy, fairness, gender/age balance and digital divide;





- Knowledge, experience or interest in any of the following areas: voting systems, (computational) social choice theory, mechanism design, (crypto-) economic incentives;
- Domain knowledge, experience or interest in any of the applications of mobility, (multi-modal) transport, parking, participatory budgeting and energy.

## How to apply

You can apply for this role online; more guidance can be found on our [How to Apply](#) information page. Applications should be submitted by 23.59 (UK time) on the advertised [closing date](#).

## Contact information

To explore the post further or for any queries you may have, please contact:

**[Dr. Evangelos Pournaras](#), Associate Professor**

Tel: +44 (0)113 343 5447

Email: [E.Pournaras@leeds.ac.uk](mailto:E.Pournaras@leeds.ac.uk)

## Additional information

### Faculty and School Information

Further information is available on the research and teaching activities of the [Faculty of Engineering and Physical Sciences](#) and the [School of Computing](#).

### A diverse workforce

As an international research-intensive university, we welcome students and staff from all walks of life and from across the world. We foster an inclusive environment where all can flourish and prosper, and we are proud of our strong commitment to student education. Within the Faculty of Engineering and Physical Sciences we are dedicated to diversifying our community and we welcome the unique contributions that individuals can bring, and particularly encourage applications from, but not limited to Black, Asian and ethnically diverse people; people who identify as LGBT+; and people with disabilities. Candidates will always be selected based on merit and ability.



The Faculty of Engineering and Physical Sciences are proud to have been awarded the Athena SWAN [Silver](#) Award from the Equality Challenge Unit, the national body that promotes equality in the higher education sector. Our [equality and inclusion webpage](#) provides more information.

### **Working at Leeds**

Find out more about the benefits of working at the University and what it is like to live and work in the Leeds area on our [Working at Leeds](#) information page.

### **Candidates with disabilities**

Information for candidates with disabilities, impairments or health conditions, including requesting alternative formats, can be found on our [Accessibility](#) information page or by getting in touch with us at [disclosure@leeds.ac.uk](mailto:disclosure@leeds.ac.uk).

## **Criminal record information**

### **Rehabilitation of Offenders Act 1974**

A criminal record check is not required for this position. However, all applicants will be required to declare if they have any 'unspent' criminal offences, including those pending.

Any offer of appointment will be in accordance with our Criminal Records policy. You can find out more about required checks and declarations in our [Criminal Records](#) information page.

